



2015 Small Grain Disease and Insect Pest Scouting Report

Dr. Heather Darby, Extension Agronomist
Erica Cummings, Crops and Soils Coordinator
Dr. Lily Calderwood, Crop and Soil Technician
(802) 524-6501

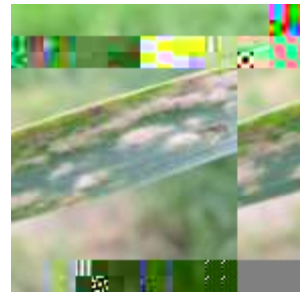
Visit us on the web at <http://www.uvm.edu/extension/cropsoil/>

Introduction

A survey of small grain diseases and insect pests were conducted in Vermont and Massachusetts during the 2015 growing season. Pests were scouted at six Vermont farm locations in the towns of Alburgh, Berlin, Bridport, North Troy, Shelburne, and

Foliar Diseases

Foliar diseases reduce photosynthetic leaf area, use nutrients, and increase respiration and transpiration within the infected plant tissues. A diseased plant typically exhibits reduced vigor, growth and seed fill. The earlier the occurrence, the greater degree of infection, and the longer duration of conditions favorable for disease development the yield loss will be greater. The following foliar diseases were identified by our scouting efforts in 2015.



Powdery mildew



Grain Head Diseases

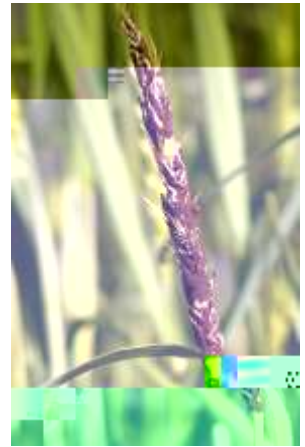


Figure 7. FHB infected wheat.

Figure 8. *Fusarium* infected grain.

Insect Pests Identified

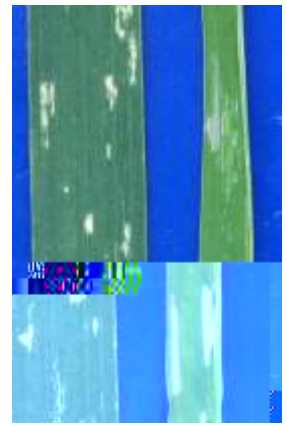


Figure 9. Thrip damage (left) and cereal leaf beetle (right).