



The following five bees are important for pollination of and/or are supported by tomatillo and ground cherry blossoms:

(*Bombus*)

The eastern bumblebee (*Bombus impatiens*) is a common native bee that is important for pollinating tomatillo and ground cherry blossoms. It is a large, fuzzy bee with a black and yellow striped abdomen. It is often seen visiting flowers and is known for its ability to buzz-pollinate.



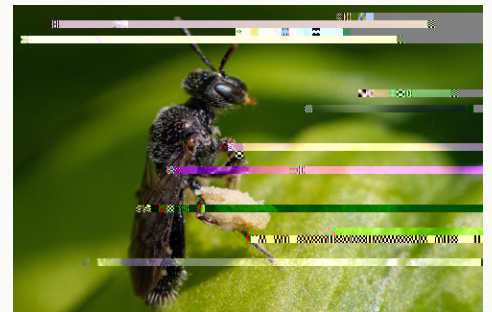
(*Colletes*)

The common mason bee (*Colletes latitarsus*) is a small, solitary bee that is important for pollinating tomatillo and ground cherry blossoms. It has a black and yellow striped abdomen and is known for its ability to buzz-pollinate. It is often seen visiting flowers and is known for its ability to buzz-pollinate.



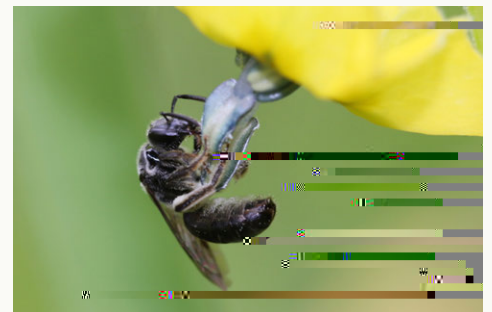
(*Perdita halictoides*)

The small hive beetle (*Perdita halictoides*) is a small, solitary bee that is important for pollinating tomatillo and ground cherry blossoms. It has a black and yellow striped abdomen and is known for its ability to buzz-pollinate. It is often seen visiting flowers and is known for its ability to buzz-pollinate.



(*Lasioglossum pectinatum*)

The mason bee (*Lasioglossum pectinatum*) is a small, solitary bee that is important for pollinating tomatillo and ground cherry blossoms. It has a black and yellow striped abdomen and is known for its ability to buzz-pollinate. It is often seen visiting flowers and is known for its ability to buzz-pollinate.



(*Epeolus bifasciatus*)

The two-banded mason bee (*Epeolus bifasciatus*) is a small, solitary bee that is important for pollinating tomatillo and ground cherry blossoms. It has a black and yellow striped abdomen and is known for its ability to buzz-pollinate. It is often seen visiting flowers and is known for its ability to buzz-pollinate.



Additional information and contact details for the University of Vermont Extension, including phone numbers and email addresses, are provided at the bottom of the page.