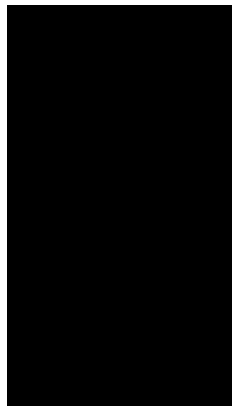


The University of Vermont

FY 2018
Sourcebook



Burlington, VT

<http://www.uvm.edu/~ofabweb>

About the UVM Sourcebook

An Introduction to The University of Vermont, “UVM”

(The acronym “UVM” is derived from Universitas Viridis Montis – University of the Green Mountains.)

The University of Vermont and State Agricultural College was formed in 1865 as the result of the combination of the University of Vermont and the Vermont Agricultural College. The University was chartered in 1791, the same year that Vermont became the fourteenth state in the Union, as the fifth college in New England and the twentieth in the United States. The Vermont Agricultural College was formed in 1864 as the State’s land-grant institution in accordance with provisions of the Federal Morrill Act.

UVM blends the academic heritage of a private university with the service mission of the land-grant tradition. In 1955, the General Assembly recognized the University of Vermont and State Agricultural College “as an instrumentality of the State for providing public higher education.” Even previous to that recognition the State had annually appropriated funds specifically to the Larner College of Medicine and to the Agricultural Services, and had appropriated tuition scholarship funds for Vermont residents in certain fields of study. Beginning in 1956, the State appropriated new funding to subsidize the cost of

t o h t o) 6 - . 1 1 . 1 (t (h S o) , - i 1 c 2 0 . . 3 e 5 u ()

Table of Contents

Student Information

- Applications and Admissions
- First-Time, First Year Applications by Residence.....2
- First-Time, First Year Admissions by Residence.....3
- First-Time, First Year Applications by College.....4
- External Transfer Admissions by Residence5

..... 4

Financial Information

..... 4 4



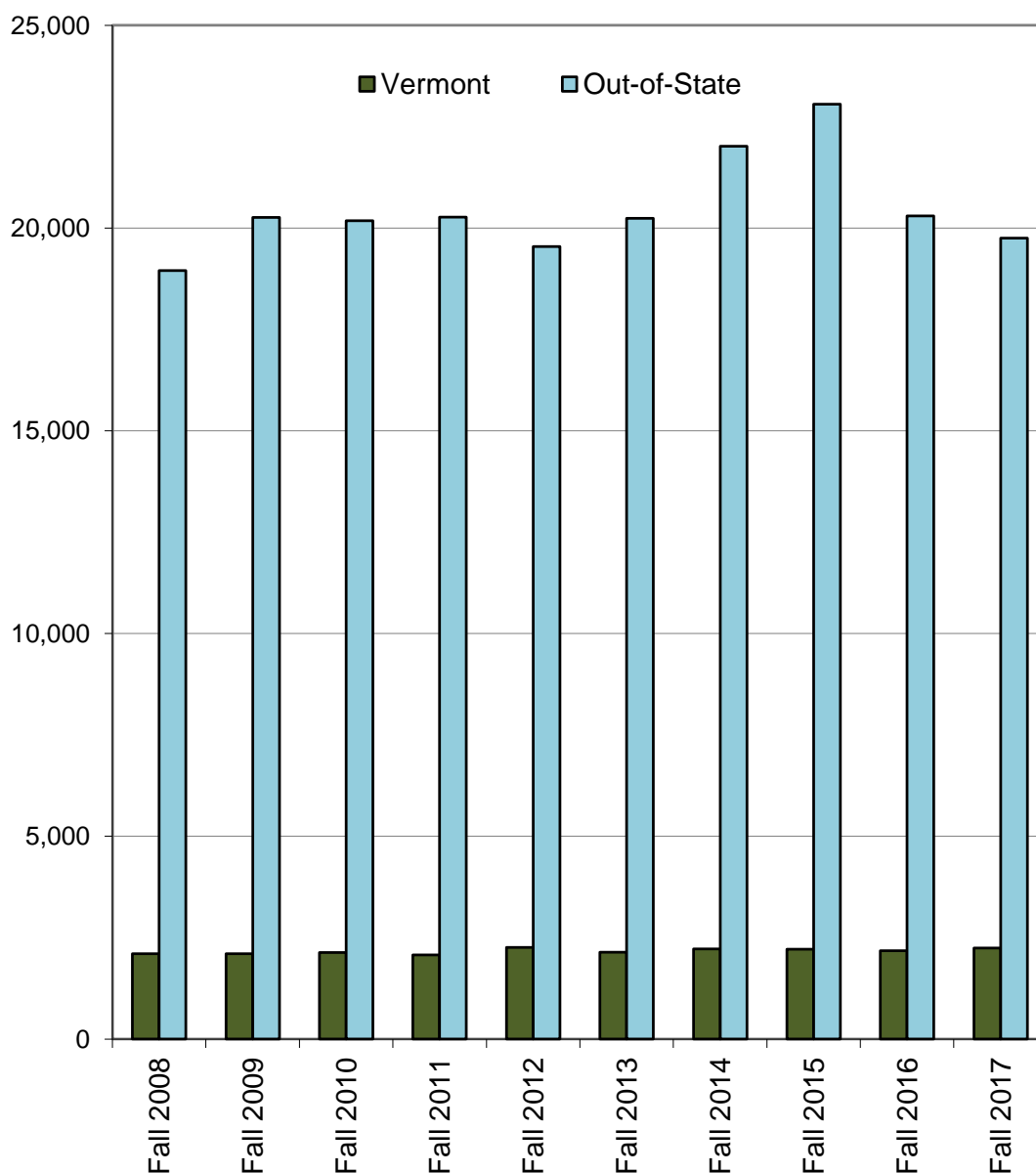
Student Information

Student Information

Applications and Admissions

First-Time, First Year Applications by Residence

UVM first-time, first year applications have been on the rise for over a decade. Since a low point in 1997 when only 5,818 out-of-state students applied, the number of out-of-state applicants increased rapidly then, from Fall 2009 to Fall 2013, reached a plateau of around 20,000. New records were set from Fall 2014 to 2015 with as many as 23,000 out-of-state applicants. However, the number of applicants from Fall 2016 and Fall 2017 indicates a return to normal levels. The number of Vermont applicants, on the other hand, has been stable, in the range of 2,071 to 2,263.



First-Time, First Year Applications by College

Number of Applications to: 2008 2009 2010 2011 2012 2013 2014 2015 2016 2017

Fall

External Transfer Admissions by Residence

From Fall 2008 to Fall 2017, total external transfer applications increased 27%; however, external transfer enrollments dropped 3%.

Vermont					
Semester	# Applicants	Admit %	# Admits	Yield %	# Enrolls
Fall 2008	457	73%	334	80%	268
Fall 2009	469	77%	359	77%	275
Fall 2010	442	74%	325	79%	258
Fall 2011	420	74%	310	76%	236
Fall 2012	419	73%	307	78%	238
Fall 2013	405	77%	312	75%	233
Fall 2014	424	72%	305	80%	244
Fall 2015	395	70%	276	77%	213
Fall 2016	354	68%	239	74%	178
Fall 2017	382	69%	263	76%	201
Out of State					
Semester	# Applicants	Admit %	# Admits	Yield %	# Enrolls
Fall 2008	820	58%	475	40%	191
Fall 2009	781	67%	521	37%	192
Fall 2010	870	63%	548	41%	224
Fall 2011	894	64%	573	36%	208
Fall 2012	817	64%	524	36%	188
Fall 2013	775	62%	482	36%	174
Fall 2014	872	65%	570	36%	205
Fall 2015	1,479	74%	1,094	30%	332
Fall 2016	1,442	69%	993	29%	285
Fall 2017	1,239	72%	891	27%	245
Total					
Semester	# Applicants	Admit %	# Admits	Yield %	# Enrolls
Fall 2008	1,277	63%	809	57%	459
Fall 2009	1,250	70%	880	53%	467
Fall 2010	1,312	67%	873	55%	482
Fall 2011	1,314	67%	883	50%	444
Fall 2012	1,236	67%	831	51%	426
Fall 2013	1,180	67%	794	51%	407
Fall 2014	1,296	68%	875	51%	449
Fall 2015	1,874	73%	1,370	40%	545
Fall 2016	1,796	69%	1,232	38%	463
Fall 2017	1,621	71%	1,154	39%	446

Admit Rate (%): percent of applicants who are admitted to the University.

Yield Rate (%): percent of admitted students who enroll at UVM.

Enrollments

Enrollments by College, Residence and Gender

College or School	Fall 2017										Fall 2016 Total	
	Vermont		Out-of-State				Total		Total			
	Male	Female	Male	Female	Male	Female	Male	Female	Male	Female		
Undergraduate												
Agriculture & Life Sciences	108	231	298	790	1,088	406	1,021	1,427	1,448			
Arts & Sciences	519	640	1,324	2,007	3,331	1,843	2,647	4,490	4,353			
Grossman School of Business	167	85	413	227	640	580	312	892	924			
Education & Social Services	57	227	61	372	433	118	599	717	684			
Engineering & Mathematical Sciences	328	67	691	247	938	1,019	314	1,333	1,261			
Rubenstein School of Environment & Natural Resources	66	61	252	349	601	318	410	728	650			
Nursing & Health Sciences	48	258	84	536	620	132	794	926	915			

Undergraduate Enrollment by State and Vermont County

Enrollments by Student Level by Gender

Semester	Undergraduate				
	# Male	# Female	# Total	% Male	% Female
Fall 2008	4,375	5,492	9,867	44.3%	55.7%
Fall 2009	4,587	5,784	10,371	44.2%	55.8%
Fall 2010	4,588	5,873	10,461	43.9%	56.1%
Fall 2011	4,643	5,816			

Multicultural and International Enrollments by College/School/Unit

College/School/Unit	Multicultural Students *					International Students **						
	Fall	Fall	Fall	Fall	Fall	Fall	Fall	Fall	Fall	Fall		
	2012	2013	2014	2015	2016	2017	2012	2013	2014	2015	2016	2017
Agriculture & Life Sciences	126	126	146	160	182	174	19	23	28	50	62	48
Arts & Sciences	554	545	535	543	509	556	52	54	68	103	149	198
Grossman School of Business	65	66	81	70	83	77	59	66	82	135	147	153
Education & Social Services	81	80	75	80	89	81	10	9	7	10	17	21
Engineering & Mathematical Sci.	86	103	113	129	129	139	37	40	72	106	130	138
Rubenstein School of Env. & Natural Resources	61	64	67	68	67	56	1	3	2	5	9	9
Nursing & Health Sciences	91	99	107	95	89	86	7	6	9	15	14	16

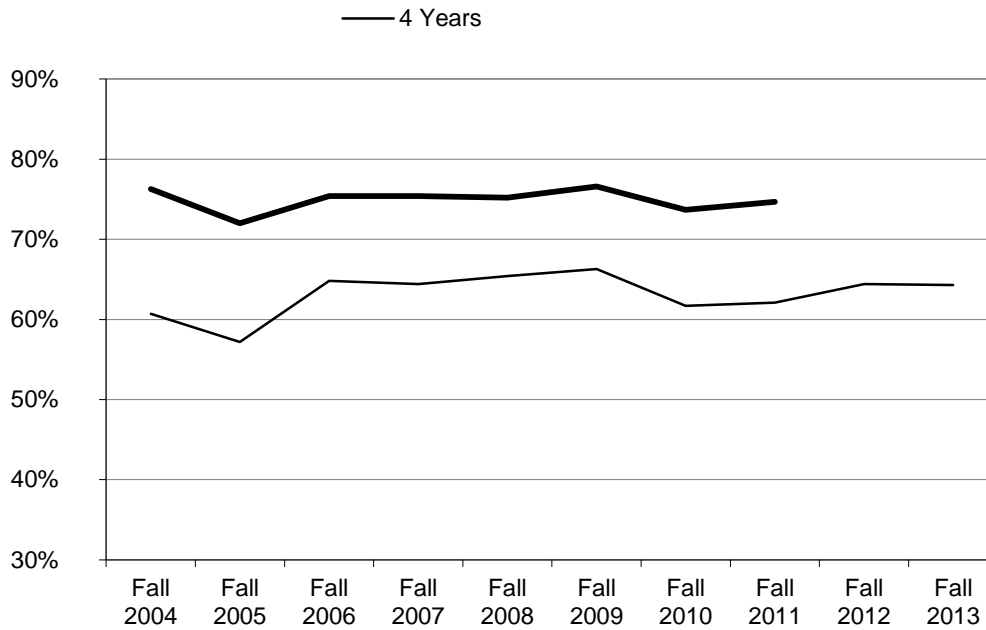
Full-Time Equivalent (FTE) Students Taught by Student Level

Student Level

Graduation and Retention

Graduation Rates after Four and Six Years for First-Time, First Year Students Entering Fall 2004 to 2013

The percent of students who successfully complete their degree programs is one of the University's most important "measures of success." About 74.7% of the first-time, first year class who entered in Fall 2011, the latest class for whom complete data is available, graduated within six years. It is important to note that UVM graduation rates compare favorably with those at other select public universities.

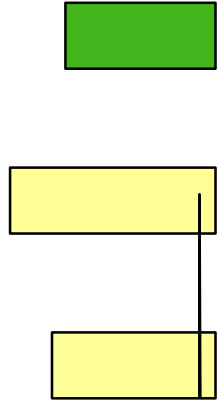
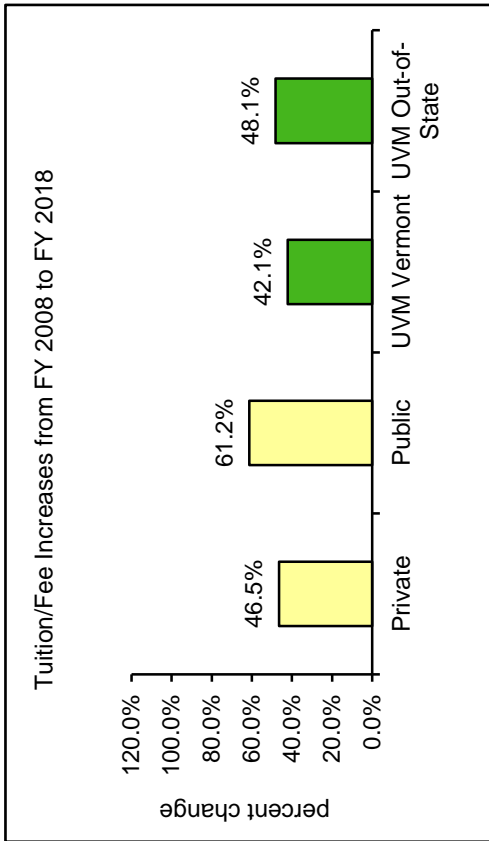


Class Entering	Percent Graduating in	
	4 Years	6 Years
Fall 2004	60.7%	76.3%
Fall 2005	57.2%	72.0%
Fall 2006	64.8%	75.4%
Fall 2007	64.4%	75.4%
Fall 2008	65.4%	75.2%
Fall 2009	66.3%	76.6%
Fall 2010	61.7%	73.7%
Fall 2011	62.1%	74.7%
Fall 2012	64.4%	-----
Fall 2013	64.3%	-----

Note: 2011 is the last year with complete data.

University of Vermont Student Cost Increases Compared to National Averages

The University of Vermont has been successful in keeping cost increases below national averages.



Personnel Information

Personnel Information

Faculty

Faculty Headcount and University FTE by Fall

FY 2017 Average Faculty Salary by Unit by Tenure Track Rank

The University of Vermont and Participants in the Oklahoma State University Faculty Salary Survey

	Unit	Professor	Associate Professor	Assistant Professor
UVM	Agriculture & Life Sciences	\$122,293	\$89,209	\$75,100
	Arts & Sciences	\$117,334	\$85,953	\$70,227
	Grossman School of Business	\$202,050	\$160,641	\$136,472
	Education & Social Services	\$115,713	\$83,398	\$72,902
	Engineering & Mathematical Sciences	\$137,303	\$108,772	\$88,303
	Rubenstein Environment & Natural Res.	\$111,793	\$92,633	\$67,777
	Nursing & Health Sciences	\$107,387	\$90,016	\$75,643
OSU	Agriculture & Life Sciences	\$125,645	\$93,026	\$82,376
Survey	Arts & Sciences	\$128,731	\$85,375	\$74,779
	Grossman School of Business	\$219,370	\$166,167	\$156,066
	Education & Social Services	\$121,167	\$84,625	\$71,650
	Engineering & Mathematical Sciences	\$143,017	\$101,078	\$89,554
	Rubenstein Environment & Natural Res.	\$114,871	\$87,336	\$77,249
	Nursing & Health Sciences	\$124,412	\$91,584	\$78,947

The AAUP multiplier of 0.818 was used to convert twelve-month salaries to nine-month salaries.

Source: [2016-2017 Faculty Salary Survey of Institutions Belonging to Association of Public and Land-Grant Universities](#). Oklahoma State University: April 2017.

Faculty and Staff

 Full-Time Faculty and Staff Headcount by Gender

Employee Type	Gender	2010	2011	2012	2013	2014	2015	2016
Faculty	Female	208	219	228	230	233	226	220
Instructional	Male	393	369	371	363	359	341	345
Tenure Track	Total	601	588	599	593	592	567	565
Faculty	Female	208	244	253	251	255	269	309
Instructional & Research	Male	268	349	348	347	349	357	392
Not Tenure Track	Total	476	593	601	598	604	626	701
Faculty	Female	32	26	25	27	24	25	24
Extension & Library	Male							

Faculty & Staff Total Compensation

Growth of UVM Payroll & Benefit Costs

About 65.9% of UVM's total operating budget is spent on compensation. For FY 2018, compensation costs are estimated at almost \$441,107,240. The growth in benefit costs over the past 10 years has outpaced the growth in payroll costs by 7.8%.

Fiscal Year	Payroll Costs		Benefit Costs		Total Compensation Costs
	Total	Growth Index	Total	Growth Index	
FY 2008 ¹	\$230,129,162	100.0	\$111,458,627	100.0	\$341,587,788
FY 2009	\$240,122,264	104.3	\$116,820,512	104.8	\$356,942,776
FY 2010	\$245,853,729	106.8	\$113,626,644	101.9	\$359,480,373
FY 2011	\$255,135,874	110.9	\$121,331,142	108.9	\$376,467,016
FY 2012	\$256,488,429	111.5	\$117,340,340	105.3	\$373,828,769
FY 2013	\$261,617,916	113.7	\$120,504,527	108.1	\$382,122,443
FY 2014	\$268,441,563	116.6	\$124,849,775	112.0	\$393,291,338
FY 2015	\$271,693,656	118.1	\$130,398,377	117.0	\$402,092,033
FY 2016	\$285,554,378	124.1	\$146,903,700	131.8	\$432,458,078
FY 2017	\$285,554,378	124.1	\$146,903,700	131.8	\$432,458,078
FY 2018 ²	\$291,265,466	126.6	\$149,841,774	134.4	\$441,107,240

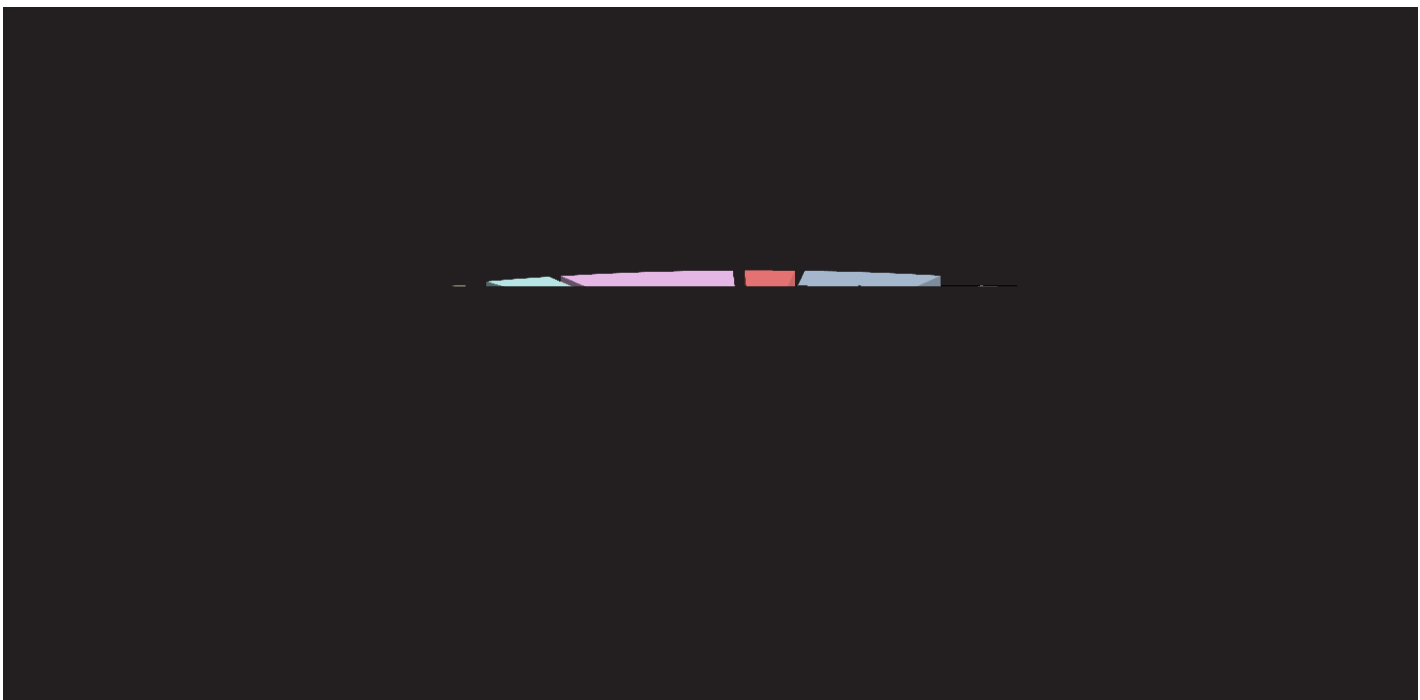
Source: University of Vermont Financial Report .

¹ Starting in FY 2008, postemployment benefit cost is recorded as benefit expense, which accounts for an additional \$26 million.

² Estimated total compensation.

Components of Projected FY 2018 Benefit Expense Budget

As shown below, the largest components of benefit expenses are medical/dental health, retirement, and social security, which comprise 87.2% of total benefit expenses.



Financial Information





Restricted Funds

Sponsored Project Awards By Purpose *

FY	Research	Instruction	Other **	Total \$	Constant \$	# Awards
2008	100,702,258	8,854,473	12,461,556	122,018,287	122,018,287	718
2009	106,738,539	10,579,962	16,323,762	133,642,263	135,576,946	771
2010	121,058,086	9,016,188	15,802,845	145,877,119	146,446,797	755
2011	100,091,965	9,571,284	19,201,991	128,865,240	124,922,680	703
2012	89,859,671	11,550,592				

Comparison of Endowment & Private Support - FY 2016

Endowment per Student. Endowment support is an important component of UVM's budget. In FY 2016, the ratio of UVM's endowment market value to the number of FTE students was \$39,398 per student.

Total Voluntary Support per Student. UVM's total voluntary support per student FTE (which includes all gifts and grants from individuals, corporations, foundations, and organizations) was \$5 Tw 4.14 (ud17w 4.3191015 Tw 6.728 0 Td [(wa)-1 (ow,)Tcor3 (Td [[0.3f 0 Tc 0 Tw5.599 re56 l3 (Td [[0.3f 0 Tc 0

Endowment per Student			Total Voluntary Support per Student					
1	Boston College	\$162,803	1	Boston College	\$9,798	1	William & Mary	25.00%
2	William & Mary	\$99,246	2	William & Mary	\$7,353	2	Boston College	21.90%
3	George Washington	\$88,771	3	Boston University	\$6,067	3	UMASS-Amherst	13.80%
4	Boston University	\$63,969	4	George Washington	\$5,732	4	Vermont	10.60%
5	Syracuse	\$58,314	5	CU-Boulder	\$5,193	5	Boston University	10.10%
6	Vermont	\$39,398	6	Vermont	\$5,173	6	UCONN	7.00%
7	CU-Boulder	\$19,603	7	Syracuse	\$4,553	7	George Washington	6.60%
8	UCONN	\$13,088	8	Stony Brook	\$3,420	8	Syracuse	6.50%
9	Stony Brook	\$11,691	9	UCONN	\$2,511	9	SUNY Binghamton	6.20%
10	UMASS-Amherst	\$11,225	10	UMASS-Amherst	\$1,282	10	CU-Boulder	4.80%
11	SUNY Binghamton	\$7,505	11	SUNY Binghamton	\$594	11	Stony Brook	3.70%

All data generated from Voluntary Support of Education data miner at www.cae.org

Restricted Revenue

(in thousand \$'s)

	FY 2008	FY 2009	FY 2010	FY 2011	FY 2012	FY 2013	FY 2014	FY 2015	FY 2016	FY 2017
Federal, State, and Private Grants and Contracts										
Federal appropriations, grants and contracts	109,846	113,001	117,865	129,144	116,320	113,560	115,338	116,382	115,455	109,273
State grants and contracts	2,068	2,978	4,750	5,767	3,089	3,702	3,805	2,854	3,298	3,369
Private grants and contracts	25,248	26,847	24,659	31,331	37,257	62,669	51,786	51,404	54,696	60,327
Subtotal	137,162	142,826	147,274	166,242	156,666	179,931	170,929	170,640	173,449	172,969
Student Loan Interest and Other Operating Revenues										
Student loan interest	400	494	352	387	406	401	1,312	364	354	335
Other operating revenues	1,235	1,253	1,039	1,243	1,480	4,684	4,585	7,095	7,769	8,583
Subtotal	1,635	1,747	1,391	1,630	1,886	5,085	5,897	7,459	8,123	8,918
Non Operating Revenues										
State appropriations	5,163	5,546	5,065	5,096	5,088	5,066	4,824	4,549	4,553	4,431
Federal Pell Grants	4,403	4,863	8,091	9,066	9,662	8,790	8,198	8,015	7,186	6,874
Private gifts	13,415	13,213	18,119	8,295	5,534	1,474	3,999	425	520	503
Net investment income	2,483	(49,467)	19,372	53,321	(6,991)	38,139	47,047	1,351	(10,449)	44,504
Transfers to UVM from component units	4,526	3,391	4,371	3,548	2,035	9,856	13,686	18,483	17,527	14,305
Capital gifts and grants	1,449	985	7,865	1,885	2,763	891	21	162	180	444
Gifts for endowment purposes	7,063	4,655	5,676	4,905	2,124	1,051	683	352	1,646	0
Subtotal	38,502	(16,814)	68,559	86,116	20,215	65,267	78,458	33,337	21,163	71,061
Total	177,299	127,759	217,224	253,988	178,767	250,283	255,284	211,436	202,735	252,948

Note: Restricted revenue comprised of restricted expendable and restricted non-expendable net position.

State Support

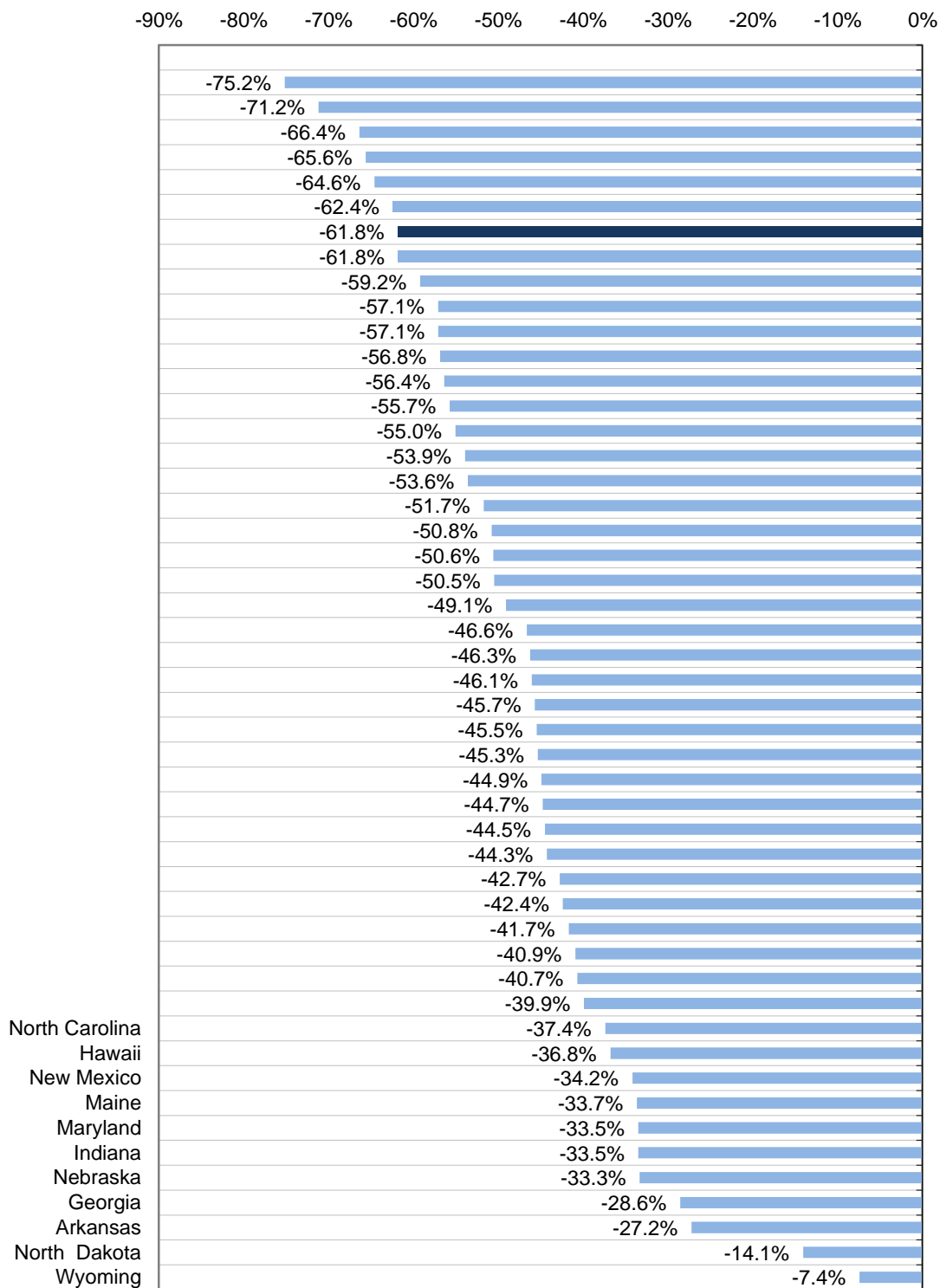
UVM State Appropriation History

(in thousands \$'s)

FISCAL YEAR	APPROPRIATION RECEIVED	% CHANGE	APPROPRIATION RECEIVED	% CHANGE	ORIGINAL APPROPRIATION	COMPARATIVE GROWTH INDEX	CPI
1999	\$28,253	3.4%	\$28,253	3.4%	100.0%	100.0%	100.0%
2000	\$30,331	7.4%	\$30,331	7.4%	107.4%	107.4%	103.7%
2001	\$32,447	7.0%	\$32,447	7.0%	114.8%	114.8%	107.1%
2002 ¹	\$35,059	8.1%	\$34,182	5.3%	124.1%	121.0%	108.2%
2003	\$36,198	3.2%	\$36,198	5.9%	128.1%	128.1%	110.5%
2004	\$36,922	2.0%	\$36,922	2.0%	130.7%	130.7%	114.1%
2005	\$37,938	2.8%	\$37,938	2.8%	134.3%	134.3%	117.0%
2006	\$39,271	3.5%	\$39,271	3.5%	139.0%	139.0%	122.1%
2007	\$40,842	4.0%	\$40,842	4.0%	144.6%	144.6%	125.4%
2008	\$42,272	3.5%	\$42,272	3.5%	149.6%	149.6%	131.6%
2009	\$43,329	2.5%	\$40,747	-3.6%	153.4%	144.2%	129.8%
2010	\$40,747	-6.0%	\$40,747	0.0%	144.2%	144.2%	131.1%
2011	\$40,747	0.0%	\$40,747	0.0%	144.2%	144.2%	135.8%
2012	\$40,747	0.0%	\$40,747	0.0%	144.2%	144.2%	138.1%
2013	\$40,747	0.0%	\$40,747	0.0%	144.2%	144.2%	140.5%
2014	\$42,469	4.2%	\$42,469	4.2%	150.3%	150.3%	143.4%
2015	\$42,701	0.5%	\$42,509	0.1%	151.1%	150.5%	143.6%
2016	\$42,469	-0.5%	\$42,509	0.0%	150.3%	150.5%	145.0%
2017	\$42,509	-0.4%	\$42,509	0.0%	150.5%	150.5%	146.1%
2018 ⁶	\$42,509	0.1%	\$42,509	0.0%	150.5%	150.5%	149.0%

⁶ FY 2018 CPI and Appropriation Received are estimates as of 11/01/2017.

Change in State Appropriation of Tax Funds for Higher Education per \$1,000 Personal Income Between FY 1979 and FY 2017



Source: Table 4 at <http://education.illinoisstate.edu/grapevine/tables/>
 Note: Data not available for Illinois.

State	Amount	Rank	Amount	Rank	Amount	Rank
Alabama	1,562,306,106	16	8.22	9	321.24	13
Alaska	335,851,000	42	8.24	8	452.69	4
Arizona	842,010,200	32	3.05	45	121.48	48
Arkansas	999,831,300	26	8.52	7	334.59	10
California	13,579,469,229	1	6.22	16	345.97	8
Colorado	866,808,182	28	3.03	46	156.45	45
Connecticut	1,154,757,551	21	4.55	36	322.88	12
Delaware	234,722,700	46	5.11	29	246.54	29
Florida	4,578,325,642	4	4.88	31	222.11	36
Georgia	3,203,141,388	6	7.49	12	310.67	15
Hawaii	667,478,019	36	9.29	6	467.24	3
Idaho	460,323,000	39	7.02	14	273.49	19
Illinois ³						
Indiana	1,760,033,532	13	6.13	17	265.34	22
Iowa	855,409,017	31	5.87	19	272.88	20
Kansas	769,175,109	34	5.48	25	264.57	23
Kentucky	1,170,767,200	20	6.72	15	263.87	25
Louisiana	1,094,801,855	23	5.40	28	233.85	32
Maine	299,575,645	43	5.09	30	224.99	35
Maryland	1,964,463,400	10	5.66	23	326.52	11
Massachusetts	1,544,319,564	17	3.51	43	226.71	34
Michigan	1,877,039,600	12	4.28	40	189.06	42
Minnesota	1,543,313,000	18	5.41	27	279.59	17
Mississippi	1,013,678,408	25	9.50	4	339.17	9
Missouri	1,089,159,140	24	4.10	41	178.76	43
Montana	253,311,859	44	5.77	21	242.98	31
Nebraska	753,553,849	35	8.03	10	395.13	6
Nevada	570,958,220	37	4.52	37	194.20	41
New Hampshire	125,200,059	48	1.62	49	93.80	49
New Jersey	2,083,569,000	8	3.77	42	232.94	33
New Mexico	861,383,002	29	10.71	2	413.92	5
Rhode Island	169,256,912	125				

Capital Appropriation

State Capital Appropriation History

UVM Real Estate Holdings and Facilities

LAND HOLDINGS (1)	<u>FY 2008</u>	<u>FY 2018</u>
Main Campus	(Acres)	(Acres)
Primary Academic Core		
Central District (including 3.3 acre Redstone Quarry Natural Area; 2006 included Uheights)	106	106
Centennial District (including 69.2 acre Centennial Woods Natural Area)	205	206
Redstone District	52	52
Athletic District	37	37
University Heights District (included in Central for 2005)	40	40
Trinity District	20	21
South Campus (incl. Farm, Research Property and 50 acre East Woods Natural Area)	495	494
Off Campus		
Farm Property (Includes Morgan Horse Farm)	214	214
Research Property (includes Jericho Rsch Forest, Proctor-Maple Rsch Cmplx & Colchester Business Park)	1,201	1,002
Natural Areas (excludes 122.5 acres of Natural Areas on Main Campus)	1,941	2,072
Other Property: Bolton, Fort Ethan Allen	38	23
Gift/Investment Property - In State	12	48
Gift/Investment Property - Out of State	<u>0</u>	0
Totals (Acres)	4,362	4,315
<u>FACILITIES</u> (Facilities Owned By UVM) (2)	<u>FY 2007</u>	<u>FY 2017</u>
(Room Type Categories(3) - (each category includes "service" rooms))	(Square Ftg)	(Square Ftg)
Classrooms	130,078	156,797
Laboratories	429,140	435,801
Offices/Conference Rooms	625,797	644,112
Study Areas/Libraries	172,488	158,738
Special Use/General Use (4)	396,682	394,845
Athletics	241,586	202,689
Support (5)	160,388	418,450
Health Care	7,886	9,054
Residential	858,736	724,331
UVM Facilities Utilized by Non-UVM Agencies Assignable (6)	292,240	296,121
UVM Facilities Utilized by Non-UVM Agencies Non-Assignable (7)	NA	66,041
Areas under Renovation	44,932	8,240
Inactive Space (8)	44,642	11,611
Unusable Space (9)	22,895	28,684
Total Net Assignable Square Footage (10)	3,427,491	3,460,789
Total Net Unassignable Square Footage (11)	<u>1,306,984</u>	<u>1,262,961</u>
Total Net Assignable + Net Unassignable Sqftg	<u>4,734,474</u>	<u>4,818,474</u>
Total Gross Square Footage (12)	5,250,510	5,583,254
Total Number of Buildings Owned	295	265
<u>Leased Facilities - UVM as Lessee</u>	<u>FY 2007</u>	<u>FY 2017</u>
	(Square Ftg)	(Square Ftg)
In-State (13)	98,620	103,396
Out-of-State	<u>0</u>	<u>22,003</u>

Topical Information

Topical Information

UVM Libraries

The University of Vermont Libraries furthers the creation, application, and dissemination of knowledge by providing access to information resources. The Libraries are a vital component of the University's commitment to excellence in instruction, innovation in research and scholarship, and dedication to public service. Collectively, the UVM Libraries are northern New England's largest public-research facility.

The Libraries' unique and important collections are distributed throughout two main locations: Bailey/Howe and Dana Medical; as well as the Libraries Research Annex and additional leased off-site storage.

The Libraries' total

UVM Larner College of Medicine

Established in 1822 as one of the nation's first medical schools, The Robert Larner, M.D. College of Medicine at The University of Vermont provides significant value to the community, the state and the region.

The mission of the Larner College of Medicine is to educate a diverse group of dedicated physicians and biomedical scientists to serve across all the disciplines of medicine; to bring hope to patients by advancing medical knowledge through research; to integrate education and research to advance the quality and accessibility of patient care; and to engage with our communities to benefit Vermont and the world.

In 2016, the UVM Board of Trustees voted to name the College of Medicine in honor of 1942 alumnus Dr. Robert Larner's \$100 million in lifetime giving. The new name became official on September 23, 2016. Sadly, Dr. Larner passed away in April 2017 at the age of 99.

Medical Education

Over 32% of all physicians and 40% of the primary care physicians practicing in Vermont received their education or training at UVM, and each year over 6,000 applicants compete for 120 places in the entering class. Graduates go on to residencies at top institutions nationwide, many choosing to pursue careers in primary care. The College has long been in the forefront of medical education, and is recognized as an innovator among medical schools worldwide. The curriculum offers students a firm grounding in the basic sciences, early access to diverse clinical experiences, exposure to world-class research, and an emphasis on community engagement, helping students to become competent, compassionate, dedicated physicians with a life-long desire to learn. In addition, a commitment to active learning over the last five years has inspired the goal of becoming lecture-free by 2019, an initiative that has garnered international attention from educators and prospective medical students alike.

Research

The Collemp5a (t)3 (u)10 (d)1olesThe ed ()13 (es)-3 7u(m)-3 (educ3 (i)i)-1 (t)350e(on)12 (,)3 49 0 Td ()Tj 08.91val Tw 774 .6747 Tm ()T 3451 -
Tw 774 .6740y087 (f)14-1 (a)12612 (go)1Ved ()md 649o39-21 c 0.191 Tw [(403 (i)4.46)14 (l)[Cen(dw)1tw 130ed ()

UVM Agricultural Services

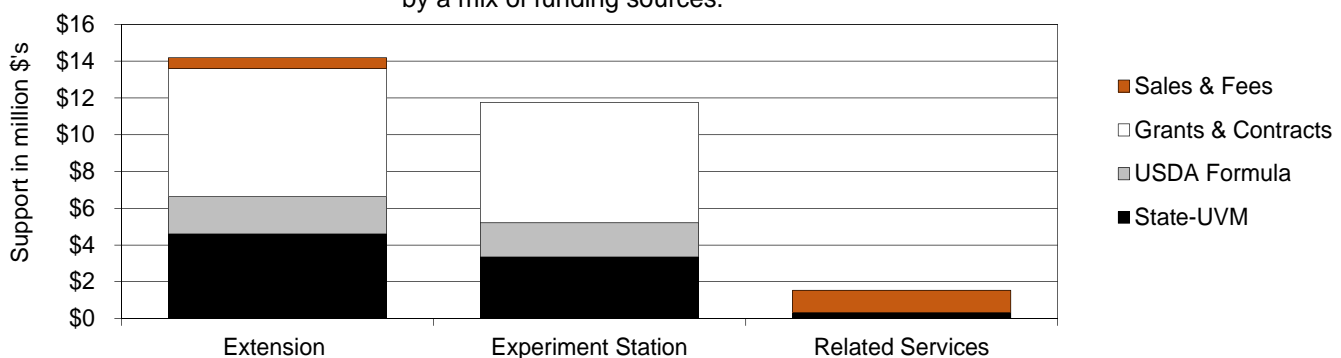
UVM Agricultural Services personnel have worked throughout Vermont in cooperation with citizens, agricultural and natural resources-based agencies and enterprises, and Vermont communities since the founding of the Experiment Station in 1886. Through these services UVM is committed to sustaining Vermont’s working landscape and cultivating healthy communities.

The Vermont Agricultural Experiment Station is a state/federal partnership created by the state legislature in 1886. The Station addresses Vermont's agricultural issues through research. In FY 2016, Station researchers conducted 118 projects funded by public and private sources. Station researchers are nationally and internationally recognized for their excellence. Areas of particular research prominence include 1) global food security and hunger; 2) variable weather; 3) sustainable energy; 4) childhood obesity; 5) food safety. A complete description of the research can be found on the VT-AES website (<http://www.uvm.edu/vtaes>).

UVM Extension is a state/federal partnership created by the Vermont Legislature in 1913, which works to cultivate healthy communities. Located in offices throughout the state, Extension faculty, staff and trained volunteers provide timely, research-based education, helping Vermonters to make sound decisions about their families, communities, businesses and the natural environment. In the past year, UVM Extension offered more than 1200 significant educational events (educational programming of six or more hours), serving more than 12,000 non-traditional students. Thousands more learn by participating in interactive, online webinars; visiting the UVM Extension website (www.uvm.edu/extension) or attending workshops and other educational/informational events. Extension’s signature farm, home and community television show “Across the Fence” on WCAX-TV in Burlington produces over 260 shows a year and, reaches an estimated 18,000 households each day. In addition, Extension's highly successful 4-H and other youth programs provide educational opportunities with more than 12,100 youth contacts through experiential learning and community service. Faculty and staff are committed to helping increase agricultural business profitability, enhance forest and farm stewardship and safety, promote economic vitality, increase adult and youth life skills and involvement in communities, and improve nutrition and food safety for thousands of Vermont consumers.

The Agricultural Related Services is a state-supported income/expense activity that provides land and facilities to support agricultural and life science teaching, research, and outreach programs. Facilities include the Proctor Maple Research Center, Morgan Horse Farm, Entomology Research Center, Pringle Herbarium, UVM Greenhouses, Blasberg Horticultural Center and the UVM Miller Farm.

The Agricultural Services' FY 2017 budgets were supported by a mix of funding sources.



UVM Graduate College

The graduate programs at UVM encompass doctoral and master's education in the basic and applied sciences and engineering; professional doctoral studies in education, nursing, and physical therapy; professional master's programs in education, nursing, business, public administration, public health, and social services; and master's programs in the humanities and social sciences. Accessibility to the graduate faculty is key to the educational experience, with high quality advising and direct research supervision identified by students as primary program attributes.

Fall 2017 Graduate Enrollment by Academic Unit				
College/School/Program	Certificates	Master's	Doctoral	Total
Agriculture and Life Sciences		85	32	117
Arts and Sciences		70	104	174

UVM Alumni

Our External Community: Alumni, Parents, and Friends

The community of UVM extends beyond the campus, throughout the city of Burlington, the state of Vermont, every state in the U.S., and 86 countries around the world. When the 2,318 undergraduate, graduate, and medical students in the class of 2017 graduated in May, they joined 111,793 members of the Alumni Association.

UVM has living 114,111 living alumni, of which 79% hold undergraduate degrees, 11% hold graduate degrees and 4% hold more than one degree from the University. UVM alumni in Vermont currently number 33,062. More than 53% live in the New England states while there are 925 who report living in other countries.

The UVM Alumni Association, a standing committee of the UVM Foundation, fosters lifelong relationships among a vibrant, global and diverse community engaged by a common desire to preserve, celeb(thu)4 (n 7o[75(UV)3(on)4 ()-27 al

UVM Continuing and Distance Education (CDE)

CDE serves the University of Vermont's commitment to lifelong learning and statewide outreach. Through the development and delivery of courses, programs and professional certificates on the UVM campus, online, and at designated off-campus locations, CDE connects the resources of the University with the needs of diverse part-time students year-round, as well as undergraduate and graduate students during the summer. CDE's educational opportunities attract thousands of individuals from Vermont and beyond every year.

- **College Credit, Academic Year** . During the academic year, CDE students have access to over 700 course sections offered in the fall and spring session at different times, such as, early morning, late afternoon, evening, weekend, and online courses and provide greater access for approximately 3,000 CDE enrollments annually. CDE attracts high school students, pre-college and college students, pre-graduate/pre-professional students, and working professionals. Students enroll in credit courses in preparation for graduate and undergraduate programs, for professional certification, or career advancement.
- **Summer University** . CDE has approximately 5,800 UVM undergraduate, graduate and part-time student enrollments in over 600 courses during Summer University through innovative field study courses, online courses along with intensives and opportunities to study abroad. Summer courses are open to high school

Glossary

