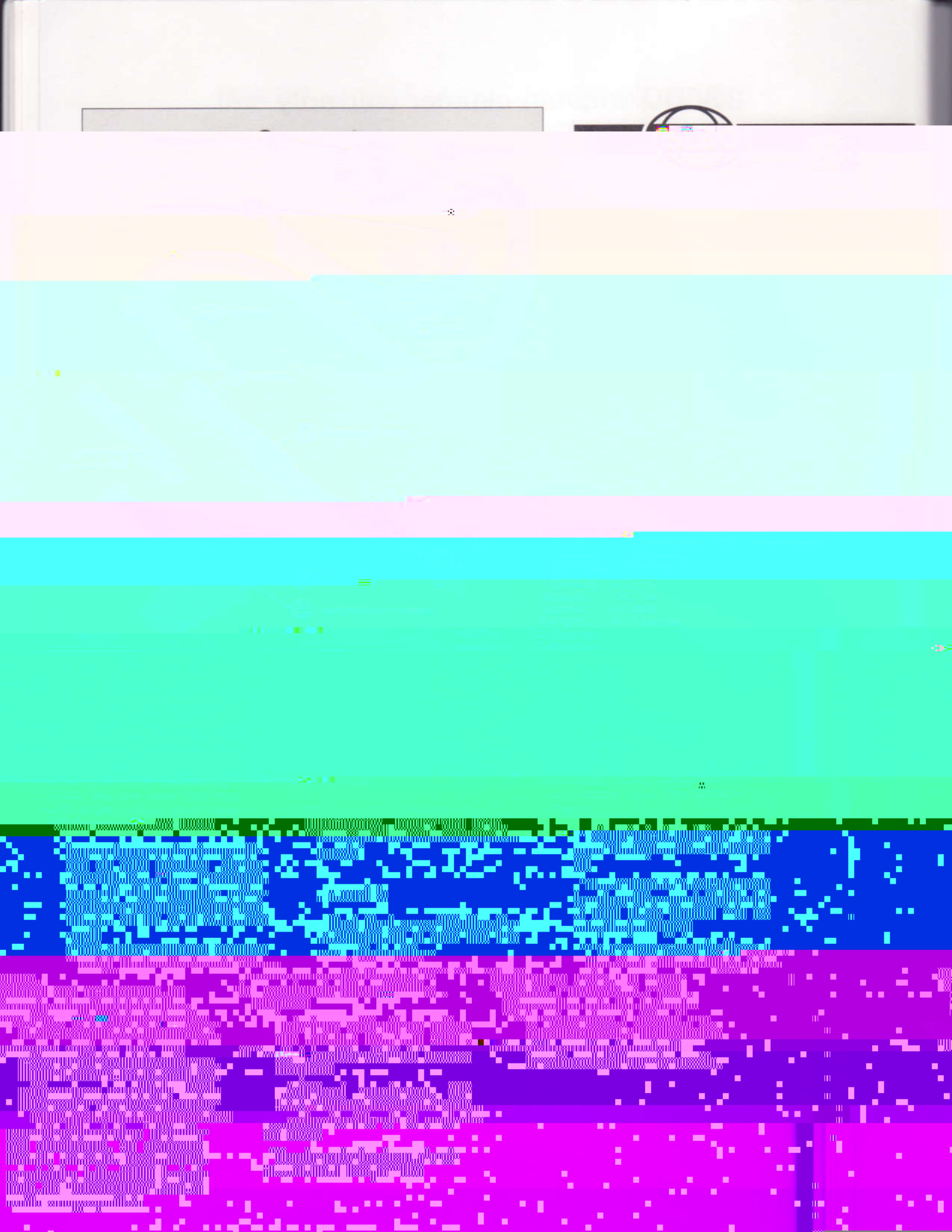


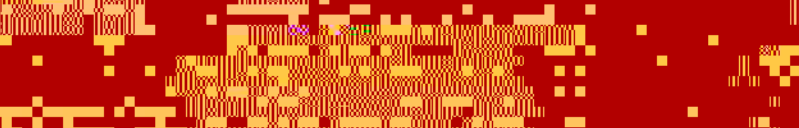
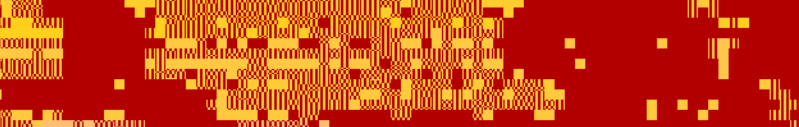
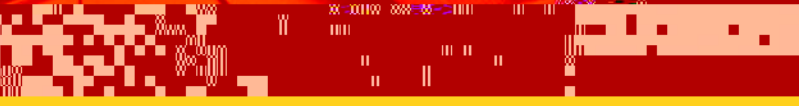
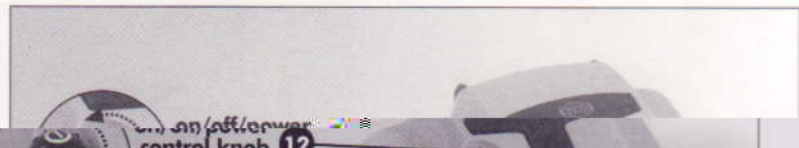


# SEBO vacuum cleaner warranty

Three-years Non-wear Parts - One Year Labor

SEBO will provide the original product purchaser with replacement of Non-Wear Parts and labor for a period of three (3) years from the original date of purchase of any product. In addition, SEBO will repair (or will cover labor charges associated with repair) a defective SEBO







18 Carrying groove

19 filter bag cover

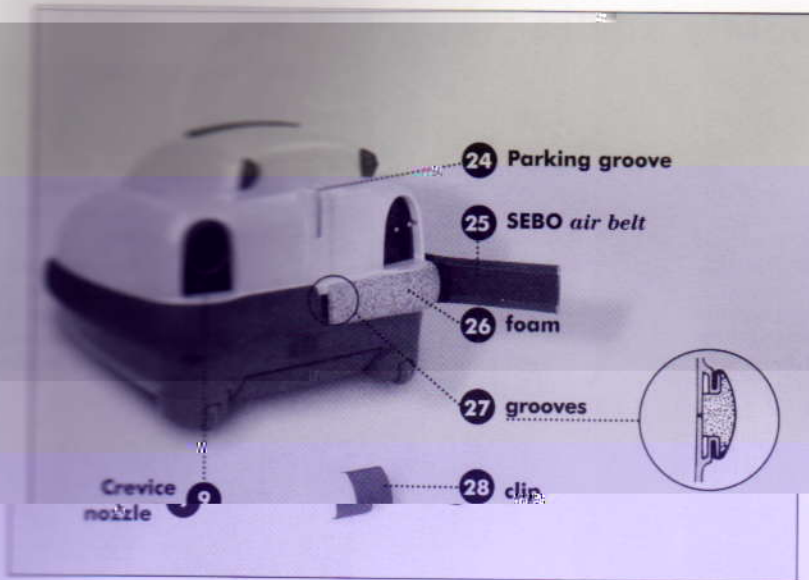


20 filter bag

Please carefully follow the diagrams when replacing the bag.

21 filter bag holder

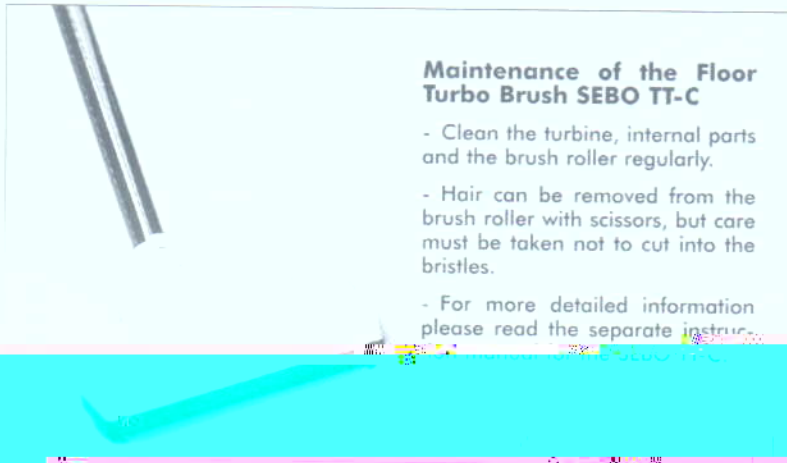




### The SEBO air belt

- Your new vacuum cleaner is fitted with the patented *air belt* shock absorber system, which protects your walls and eliminates exhaust air blast.

- The *air belt* (25) can easily be changed. Take the clip (28) off and remove the *air belt*. The foam part (26) stays on the machine. To fit the new *air belt*, slide the side rails into the grooves (27) at the back and proceed round the machine. Secure the ends with the clip (28).



### Maintenance of the Floor Turbo Brush SEBO TT-C

- Clean the turbine, internal parts and the brush roller regularly.
- Hair can be removed from the brush roller with scissors, but care must be taken not to cut into the bristles.
- For more detailed information please read the separate instructions of the SEBO TT-C.

### SEBO TT-C Floor Turbo Brush (optional)

The Floor Turbo Brush is an excellent cleaning tool for hard floors and removes dirt and hair from the floor. It is used on hard floors and is suitable for use with the SEBO TT-C. For more information please read the separate instructions of the SEBO TT-C.

## Caution – Safety advice

This is an electrical appliance.

- Children must not play with the appliance. Never connect to an internal

- The cable must only be changed by the manufacturer.
- Only connect to fans or other devices which correspond with the

- Do not expose to liquid or moisture.
- Do not use with any other internal devices.

- Do not use for prolonged use.
- Do not handle a damaged cable.